



## Biology Chapter 3: Flowers & Seeds

(1pt): How much did you study? Be Honest! Close to... 0min 10min 20min 30min 40min 50min >1hr

### Matching

- |                            |   |
|----------------------------|---|
| 1. <u>M</u> Corolla        | A) Where pollen collects before a pollen tube forms |
| 2. <u>D</u> Horticulturist | B) Stores food for growth of plumule and radicle    |
| 3. <u>N</u> Hybrid         | C) Could become the roots of a new plant            |
| 4. <u>I</u> Gamete         | D) A person who studies vegetables and fruits       |
| 5. <u>H</u> Nectar         | E) Fully developed and matured ovule                |
| 6. <u>J</u> Samara         | F) Encloses and Protects Petals                     |
| 7. <u>L</u> Anther         | G) Main cause of hay fever                          |
| 8. <u>A</u> Stigma         | H) Sweet liquid used to attract insects             |
| 9. <u>F</u> Sepal          | I) a reproductive cell                              |
| 10. <u>G</u> Ragweed       | J) Dry fruit with wings                             |
| 11. <u>K</u> Fruit         | K) A fully ripened ovary                            |
| 12. <u>E</u> Seed          | L) Produces pollen                                  |
| 13. <u>C</u> Radicle       | M) All the petals of a flower Collectively          |
| 14. <u>B</u> Cotyledon     | N) This is a cross between two plant species        |

Short Answer

(3)

15. Explain the process of pollination and fertilization.

---

---

---

---

(3)

16. Explain the process of germination (include key factors and steps).

---

---

---

---

---

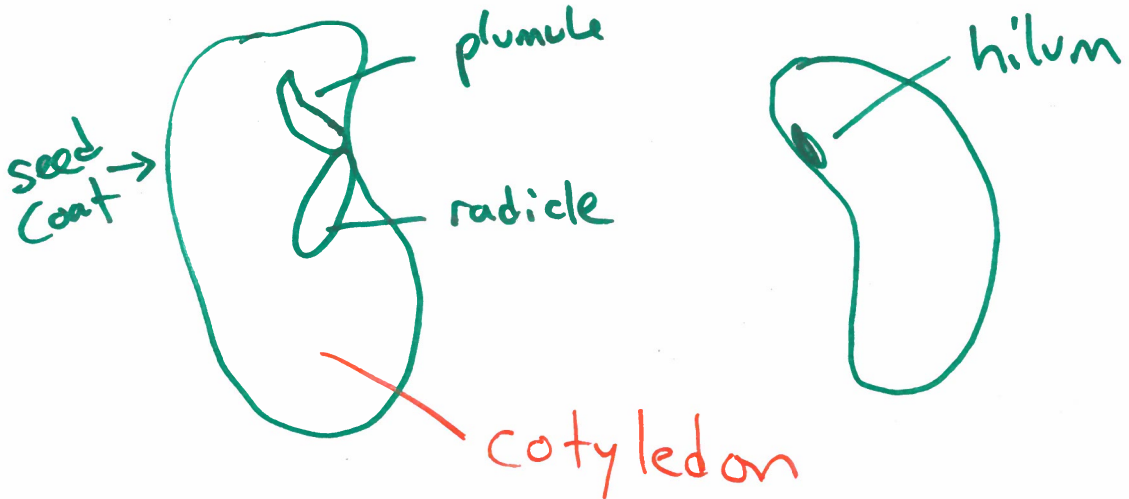
---

---

---

(3)

17. Draw a dicot seed. Label the parts using the following 4 terms: plumule, hilum, seed coat, and radical. ← catch sp (1.5)



Match the following fruits with their description

(5pt) .5 each

18. J Several flowers
19. D pod with many seeds
20. F dry fruit with hard shell
21. H fruit of graminoids
22. B outer fleshy with pit
23. A fleshy, juicy through all
24. G dry fruit with thin shell
25. E dry fruit with wings
26. C fleshy with papery core
27. I one flower, several pistil

- A. Berries
- B. ~~A~~ Drupes
- ~~B~~. Pomes
- ~~C~~ Legumes
- ~~D~~. Samaras
- ~~E~~. Nuts
- ~~F~~. Achenes
- ~~G~~ Grains
- ~~H~~. Aggregate Fruits
- ~~I~~ Multiple Fruits

28. Identify the type of fruit (1pt) and the climate in which it's grown (0.5 pt)

- a. Acorn is a(n) nut and grows in temperate
- b. Sunflower is a(n) achene and grows in temperate
- c. ~~avocado~~ is a(n) drupe and grows in subtropical
- d. Apple is a(n) pome and grows in temperate
- e. Strawberry is a(n) aggregate and grows in temperate
- f. Pineapple is a(n) multiple fruit and grows in tropical
- g. orange is a(n) berry and grows in subtropical
- h. Peas are a(n) legume and grows in temperate

Maples → samara → temperate (tot total)

rice → grain → subtropical

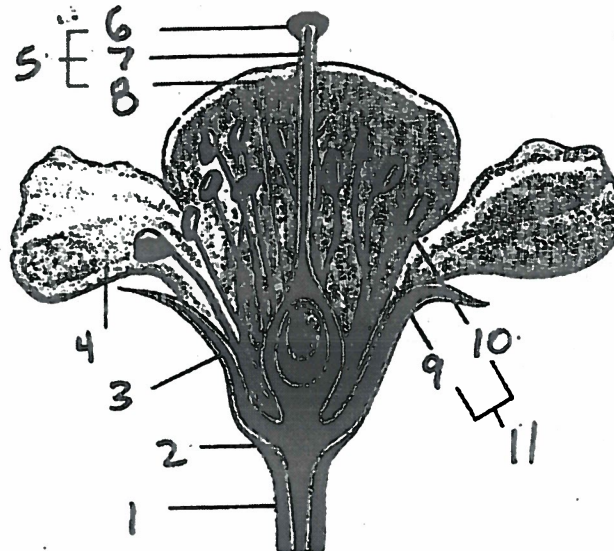
peanuts → legumes → subtropical

blackberries → aggregate → temperate

17/22

Label the flower diagram.

Parts of a flower



- 1) pedicel
- 2) receptacle
- 3) sepal
- 4) petal
- 5) pistil
- 6) stigma
- 7) style
- 8) ovary
- 9) filament
- 10) anther
- 11) stamen

**Bonus:** Give an example of a plant that uses mechanical dispersal to scatter its seed

witch hazel, four-me-not, vickets